

NOTES:

1. SUBSTRATE:
FUSED SILICA

2. COATING (APPLY ACROSS CLEAR APERTURE)

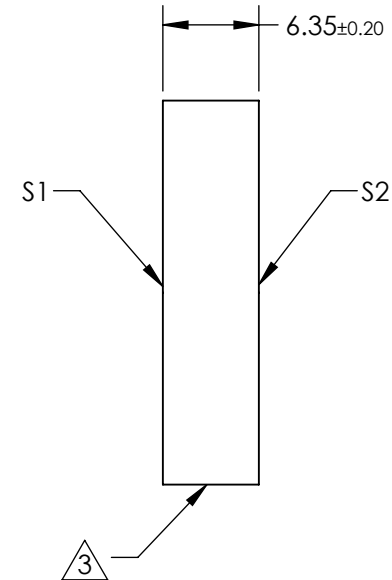
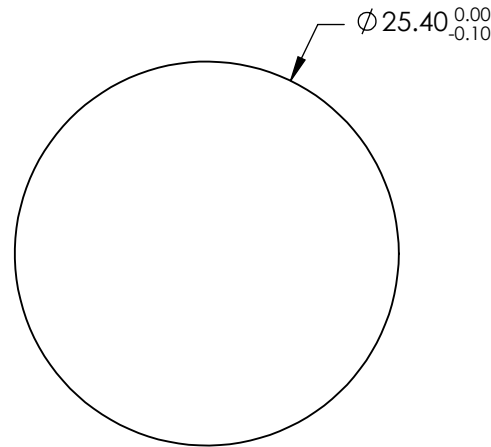
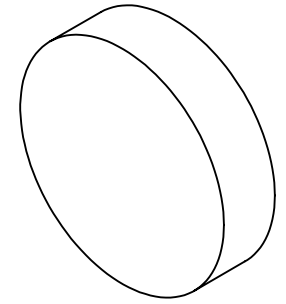
S1: Ultrafast (380-420nm)
R(AVG) S&P > 99.90% @ 400nm
R(AVG) > 99.7% @ 380 - 420nm

GDD SPECIFICATION: $\pm 20 \text{ fs}^2$ @ 380 - 420nm @ 45° AOI

S2: NONE

 FINE GRIND SURFACE

4. ROHS COMPLIANT



**FOR INFORMATION ONLY:
DO NOT MANUFACTURE
PARTS TO THIS DRAWING**

SPECIFICATIONS SUBJECT TO CHANGE WITHOUT NOTICE
DIMENSIONS ARE FOR REFERENCE ONLY

	S1	S2
SHAPE	PLANO	PLANO
SURFACE QUALITY	10 - 5	COMMERCIAL POLISH
CLEAR APERTURE	$\phi 22.86$	N/A
SURFACE FLATNESS	$\lambda/8$	N/A
BEVEL	PROTECTED AS NEEDED	PROTECTED AS NEEDED

THIRD ANGLE PROJECTION 

ALL DIMS IN

mm

 **Edmund Optics®**

TITLE

Low-GDD Ultrafast Dielectric Mirror, 400nm,
45° AOI, 25.4mm Dia., 6.35mm Thick

DWG NO

26824

SHEET
2 OF 24