

NOTES:

1. SUBSTRATE:
FUSED SILICA

2. COATING (APPLY ACROSS CLEAR APERTURE)

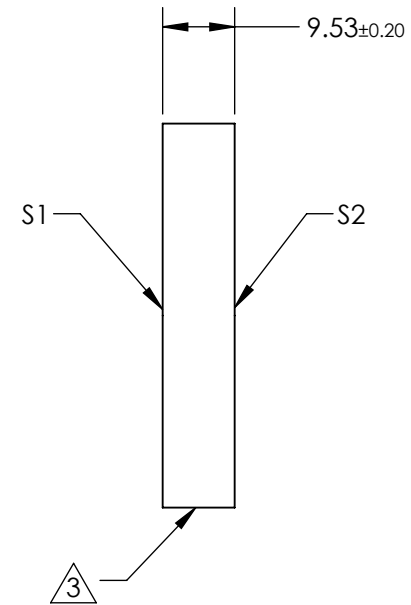
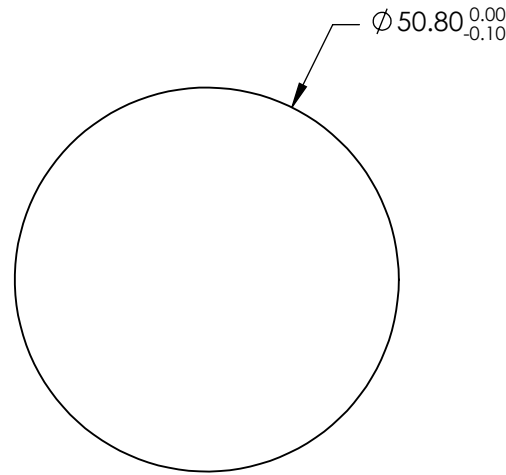
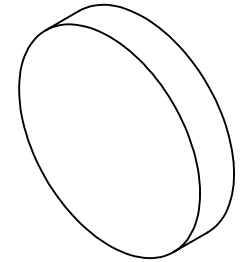
S1: Ultrafast (380-420nm)
R(AVG) S&P > 99.90% @ 400nm
R(AVG) > 99.7% @ 380 - 420nm

GDD SPECIFICATION: $\pm 20 \text{ fs}^2$ @ 380 - 420nm @ 45° AOI

S2: NONE

3. FINE GRIND SURFACE

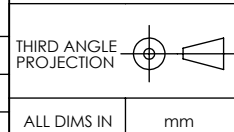
4. ROHS COMPLIANT



**FOR INFORMATION ONLY:
DO NOT MANUFACTURE
PARTS TO THIS DRAWING**

SPECIFICATIONS SUBJECT TO CHANGE WITHOUT NOTICE
DIMENSIONS ARE FOR REFERENCE ONLY

	S1	S2
SHAPE	PLANO	PLANO
SURFACE QUALITY	10 - 5	COMMERCIAL POLISH
CLEAR APERTURE	$\phi 45.72$	N/A
SURFACE FLATNESS	$\lambda/8$ over 70% CA	N/A
BEVEL	PROTECTED AS NEEDED	PROTECTED AS NEEDED



EO® Edmund Optics®

TITLE	DWG NO	SHEET
Low-GDD Ultrafast Dielectric Mirror, 400nm, 45° AOI, 50.8mm Dia., 9.53mm Thick	26825	3 OF 24