

NOTES:

1. SUBSTRATE: Fused Silica

2. COATING (APPLY ACROSS CLEAR APERTURE)

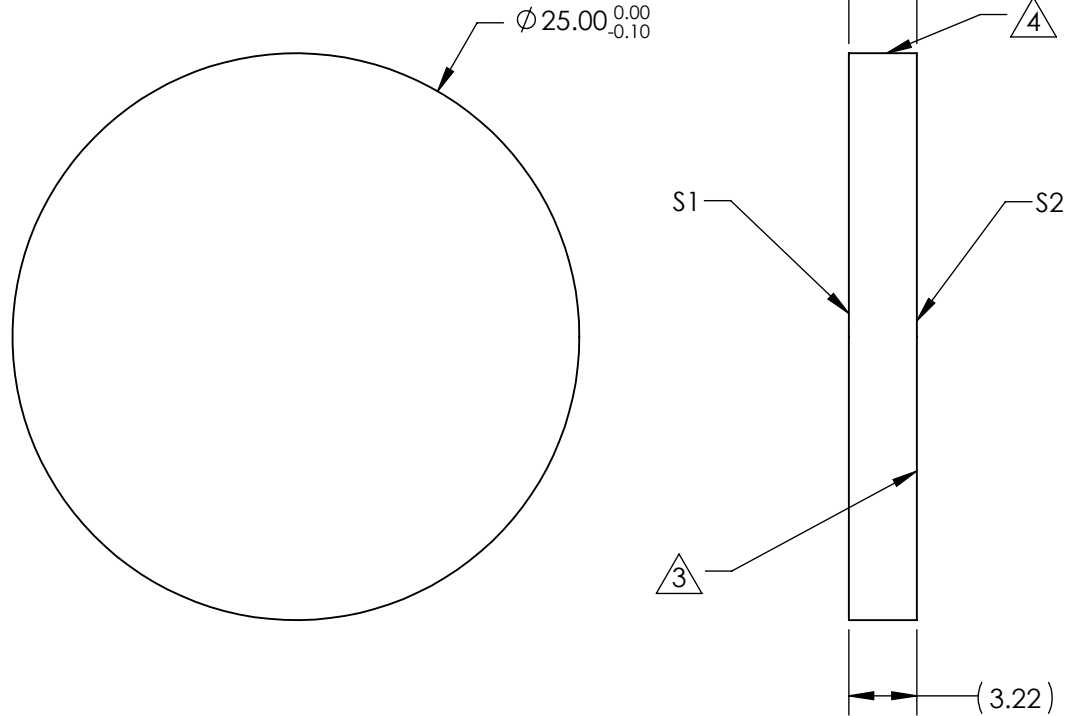
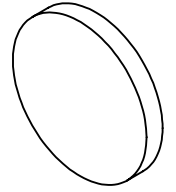
S1&S2: Rabs ≤1.5% @ 750 - 800nm
 Ravg ≤0.7% @ 750 - 1550nm
 Rabs ≤1.0% @ 800 - 1550nm

3. ARROW POINTS TOWARD TILTED SURFACE

4. FINE GRIND SURFACE

5. POWER, IRREGULARITY, AND SURFACE QUALITY SPECIFICATIONS APPLY ACROSS CLEAR APERTURE

6. ROHS COMPLIANT



**FOR INFORMATION ONLY:
 DO NOT MANUFACTURE
 PARTS TO THIS DRAWING**

SPECIFICATIONS SUBJECT TO CHANGE WITHOUT NOTICE
 DIMENSIONS ARE FOR REFERENCE ONLY

	S1	S2
SHAPE	PLANO	PLANO
RADIUS	INFINITY	INFINITY
MINI CLEAR APERTURE	∅ 22.50	∅ 22.50
SURFACE QUALITY	20-10	20-10
SURFACE ACCURACY	λ/10	λ/10
BEVEL	PROTECTED AS NEEDED	PROTECTED AS NEEDED



ALL DIMS IN

mm



TITLE

25mm Dia., NIR II Coated, 30' Wedge, Fused Silica Wedged Window

DWG NO

25622

SHEET
8 OF 15