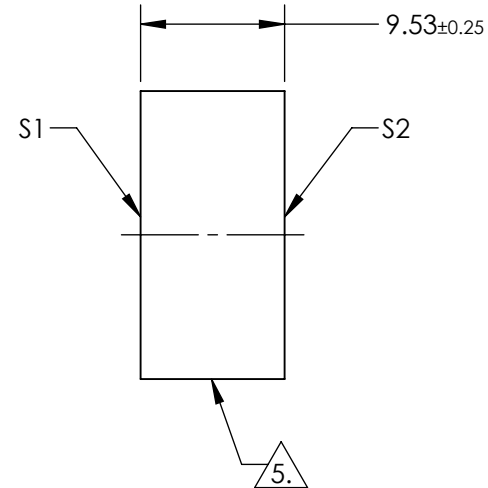
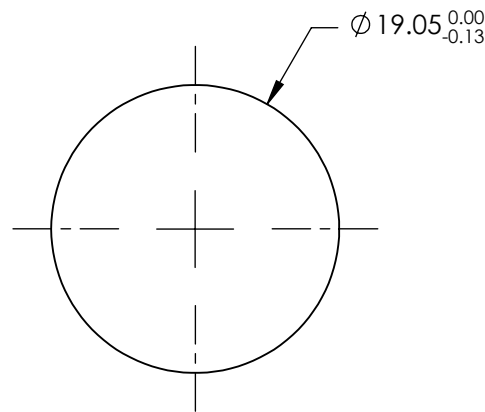
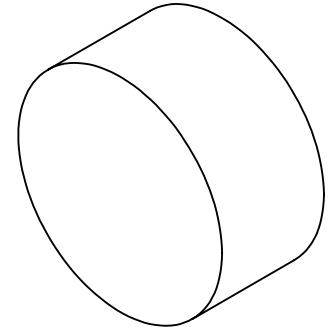


NOTES:

1. SUBSTRATE: Fused Silica
2. SURFACE S2 TO BE PARALLEL WITH SURFACE S1 TO WITHIN < 5 ARCMIN
3. COATING (APPLY ACROSS CLEAR APERTURE)  
 S1: R(ABS) = 80 ± 3% @ 1064nm  
 S2: R(ABS) < 0.25% @ 1064nm

4.  FINE GRIND SURFACE

5. ROHS COMPLIANT



**FOR INFORMATION ONLY:  
DO NOT MANUFACTURE  
PARTS TO THIS DRAWING**

SPECIFICATIONS SUBJECT TO CHANGE WITHOUT NOTICE  
DIMENSIONS ARE FOR REFERENCE ONLY

	S1	S2
SHAPE	PLANO	PLANO
SURFACE FLATNESS	$\lambda/10$	N/A
SURFACE QUALITY	10-5	10-5
CLEAR APERTURE	$\varnothing 17.15$	N/A
BEVEL	PROTECTED AS NEEDED	PROTECTED AS NEEDED

THIRD ANGLE PROJECTION 

ALL DIMS IN

mm

 **Edmund Optics®**

TITLE

1064nm, 80R/20T, 19.05mm Dia., Nd:YAG  
Laser Output Coupler

DWG NO

17623

SHEET  
1 OF 1