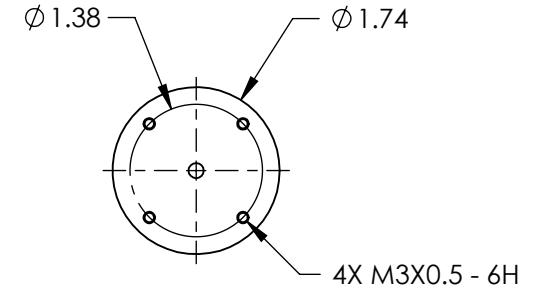
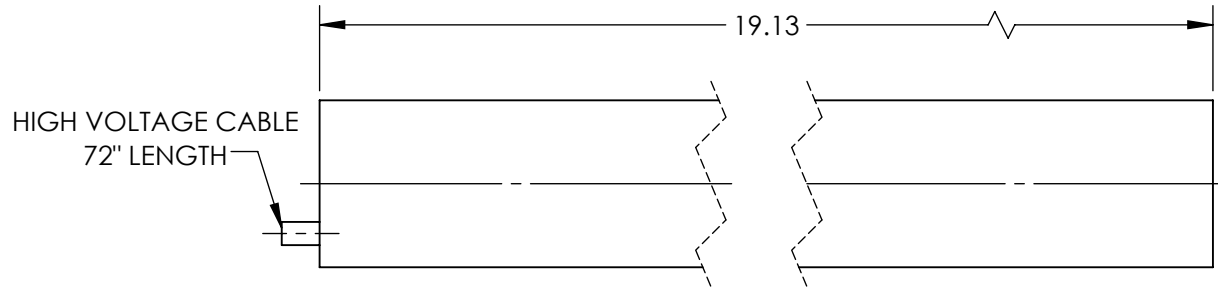


NOTES:  
1. RoHS: EXEMPT

**FOR INFORMATION ONLY:  
DO NOT MANUFACTURE  
PARTS TO THIS DRAWING**



	VALUE
WEIGHT (lbs)	1.5
WARM-UP TIME	15
RMS NOISE	30 Hz - 10 MHz: 0.1%
OPERATING TEMPERATURE (°C)	-40 to +70
OPERATING HUMIDITY	0 TO 100%, NON-CONDENSING
MODE PURITY (TEM00)	>95%
MINIMUM OUTPUT POWER, TEM00 (mW)	10
MAXIMUM DRIFT	MEAN POWER OVER 8 HRS: ±3
LONGITUDINAL MODE SPACING, NOMINAL (MHz)	320
LASER CLASS - CDRH	IIIb
COLOR	RED
POINTING STABILITY AFTER WARM UP (mrad/°C)	AFTER 15 MIN: <0.02
POINTING STABILITY (mrad/°C)	FROM COLD START, 25°: <0.1
OUTPUT POWER (mW)	10
BEAM DIAMETER (mm)	0.68
BEAM DIVERGENCE (mrad)	1.20 ± 3
POLARIZATION	500:1
STATIC ALIGNMENT	CENTERED TO OUTER CYLINDER: ±0.01" PARALLEL TO OUTER CYLINDER: ±1.0 MRAD

SPECIFICATIONS SUBJECT TO CHANGE WITHOUT NOTICE  
DIMENSIONS ARE FOR REFERENCE ONLY

**EO**® **Edmund Optics**®



THIRD ANGLE  
PROJECTION

TITLE

Model 1135P, 10mW Linear Polarization,  
Lumentum HeNe Laser

ALL DIMS IN

in

DWG NO

62727

SHEET  
1 OF 1