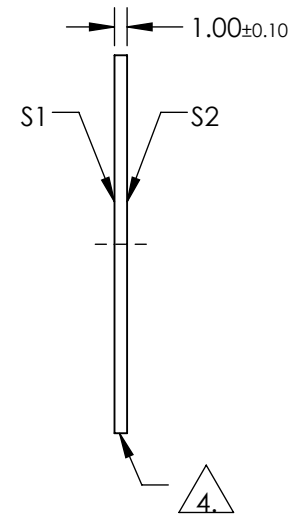
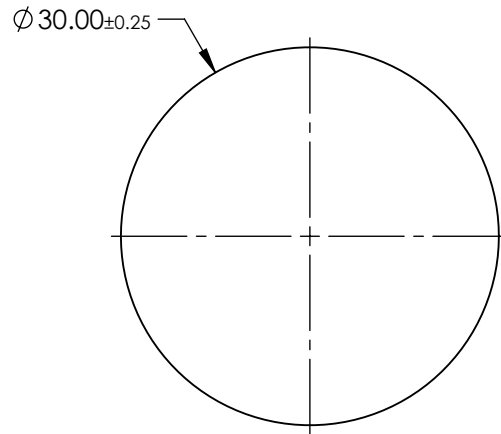
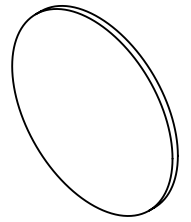


NOTES:

1. SUBSTRATE: OPTICAL GRADE SAPPHIRE (Al<sub>2</sub>O<sub>3</sub>)
2. SURFACE S2 TO BE PARALLEL TO SURFACE S1 TO WITHIN <3.5 ARCMIN
3. COATING (APPLY ACROSS COATING APERTURE):  
S1 & S2: 1/4 Wave MgF<sub>2</sub> @ 550nm

4. GRIND SURFACE

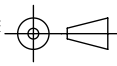
5. RoHS: COMPLIANT



**FOR INFORMATION ONLY:  
DO NOT MANUFACTURE  
PARTS TO THIS DRAWING**

SPECIFICATIONS SUBJECT TO CHANGE WITHOUT NOTICE  
DIMENSIONS ARE FOR REFERENCE ONLY

	S1	S2
SHAPE	PLANO	PLANO
SURFACE QUALITY	80-50	80-50
SURFACE FLATNESS @ 632.8nm	2λ	2λ
SURFACE ROUGHNESS (μm/in)	0.1	0.1
BIREFRINGENCE	0.008	0.008
CLEAR APERTURE	Ø27.00	Ø27.00
BEVEL	PROTECTIVE AS NEEDED	PROTECTIVE AS NEEDED

THIRD ANGLE PROJECTION 

ALL DIMS IN mm

**EO**® **Edmund Optics**®

TITLE	Window Saph 30 Dia MgF <sub>2</sub> Ctd		
DWG NO	39234	SHEET	1 OF 1